



Fiber Optic Splice Closures GJS03



Product Catalogue

GJS03 Series Description

GJS03 series is high-quality fiber optic splice closures which are specially designed to ensure high protection and full recovering of physical construction and functionality of connected optical cables. The dome material is mixed with chemical agents in order to increase the resistant of corrosion and aging and also to provide longtime UV-protection.

It can be installed in aerial locations, ducted applications, direct buried, manholes. Small volume but large capacity.

Main Features

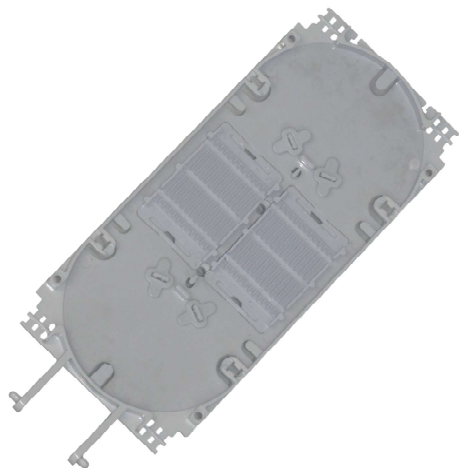
- ❖ Excessive fibers can be stored in storage baskets. Easy in fiber management.
- ❖ Fabricated by mixing the imported material and other chemical assistant agent (ageing resistance & ultraviolet radiation resistance), increase of service life
- ❖ Base-to-dome seals on closure are mechanical and heat-shrinkable for ease of installation and reentry. No other sealing adhesive tape is needed
- ❖ Base and dome sealed with clamp and O-ring system
- ❖ The splice trays are hinged for access to any splice without disturbing others trays
- ❖ The inner parts and fixing parts are made of stainless steel
- ❖ Closure with a earthing device protect it from damage by lightning
- ❖ Compatible with most cable types (single fiber or ribbon), and cable constructions (loose tube, central core, slotted core, modular). And the product can be used in any environment (aerial, buried, hand-hole, manhole) and in many applications (tap-off, expressed, branch, and repair)

GJS03 Series Specifications

Model / Series		GJS03
Material		
	- dome and base	PP alloy
	- splice tray	ABS
	- splice protectors	heat-shrinkable tube with metallic strength member
Atmospheric pressure		70 ~ 150kPa
Working temperature		- 40 ~ + 70°C
Axial tension		> 2000N / 1min
Stretching resistance		2500N / 10 cm ² (1min)
Insulation resistance		> 2 x 10 ⁴ MΩ
Voltage strength		15kV / 1min, no arcover or breakdown
Pressure in the water		50m / 72hours
Splice tray with optical taking-in radius		≥ 40mm (ensured low optical loss)
Cable sealing method		Heat-shrinkable seals
Application environment		Aerial, Buried, Pipe-lined

Used Splice Trays

S1, 24 splices



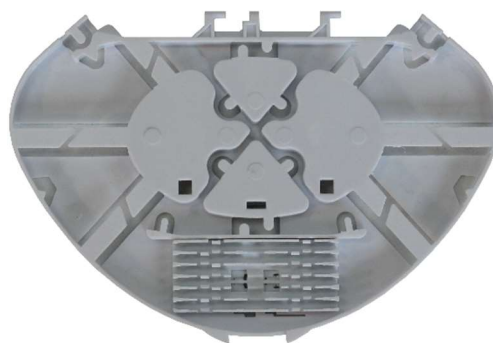
B2, 24 splices



S2, 24 splices



ST-MxAX, 12 splices



GJS03 A4 with S1 splice tray

A closure can accommodate up to 6 trays with a capacity of 24 fiber splices each. The splice protectors are placed in the middle of the tray.

The FO closure design allows using loose tube storage baskets behind the splice trays.

Available two splice tray support modules – metallic and plastic.

1 oval and 4 round cable ports



Technical Specification

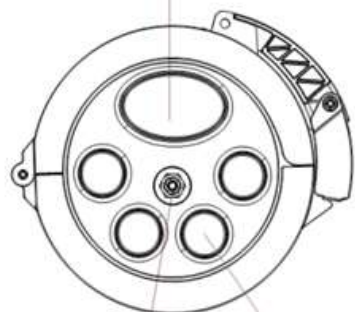
Model	GJS03-A4-S1		
Splice tray type	S1		
Product name	A4-S1-144-M	A4-S1-96-P	A4-S1-48-P-SB
KST product code	7.6222/OSP	7.6226/OSP	7.6242/OSP
Closure capacity	144 fibers	96 fibers	48 fibers
Maximum capacity	144 fibers	96 fibers	96 fibers
Splice tray holder material	metallic	PP alloy	
Storage basket	option*	option	yes
Number of entry ports			
- oval port:	1		
- round port:	4		
Applicable cable diameter, mm			
- oval port:	10 - 25mm		
- round port:	6 - 25mm		
Number of splice trays	6	4	2
Splice tray capacity	24 single fibers		
Splice protector position	in the middle of the tray		
Number of splice protectors	144	96	48
Splice protector length	45mm		
Dimension	421 x 185mm		

Pictures



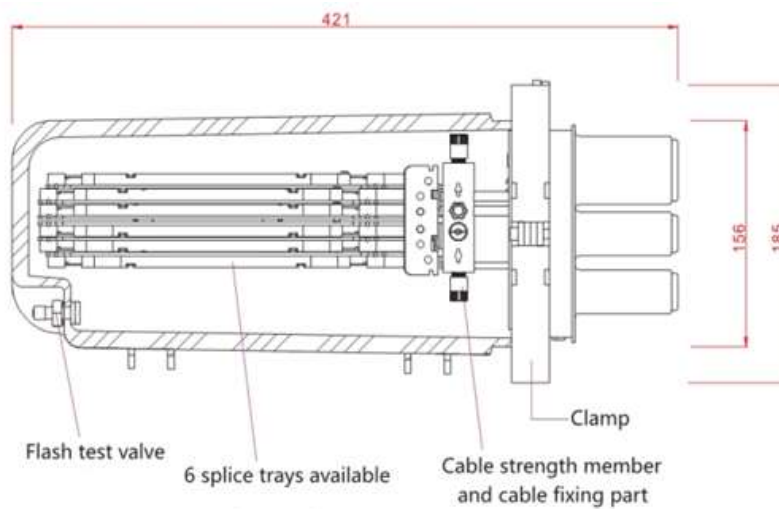
Exterior Structure Diagram

Oval Port for 2 cables 10 to 25mm



Round port application
cable dia.6to25mm

Optional ground feed-through lug



GJS03 A4 with S2 splice tray

A closure can accommodate up to 6 trays with a capacity of 24 fiber splices each. The splice protectors are placed in both sides of the tray.

The FO closure design allows using loose tube storage baskets behind the splice trays.

Available two splice tray support modules – metallic and plastic.

1 oval and 4 round cable ports



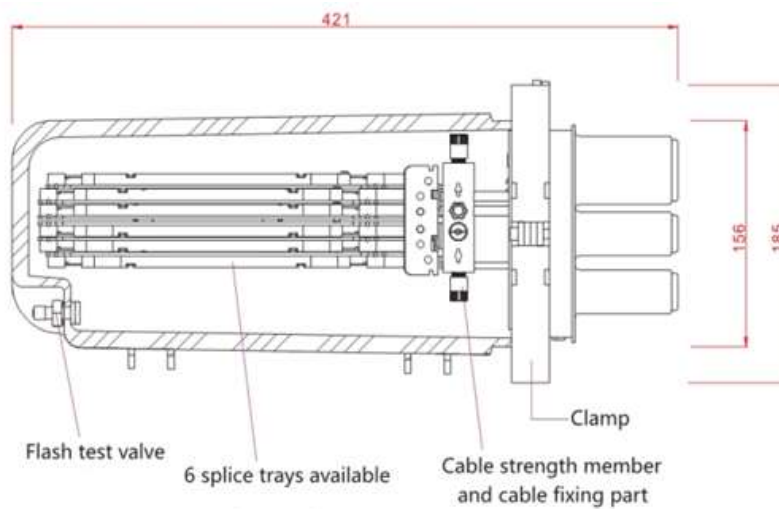
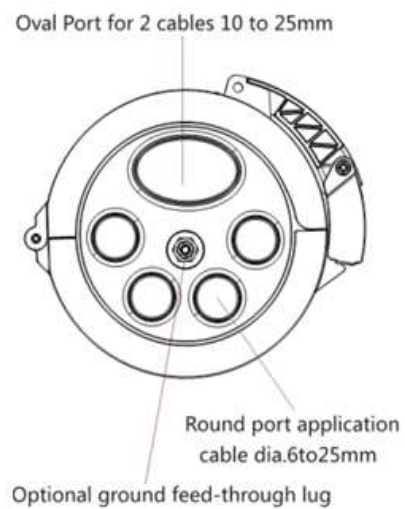
Technical Specification

Model	GJS03-A4-S2			
Splice tray type	S2			
Product name	A4-S2-144-M	A4-S2-96-P	A4-S2-48-P	A4-S2-48-M
KST product code	7.6230/OSP	7.6224/OSP	7.6246/OSP	7.6236/OSP
Closure capacity	144 fibers	96 fibers	48 fibers	48 fibers
Maximum capacity	144 fibers	96 fibers	96 fibers	144 fibers
Splice tray holder material	metallic	PP alloy	PP alloy	metallic
Storage basket	option*	option	option	option*
Number of entry ports				
- oval port:	1			
- round port:	4			
Applicable cable diameter, mm				
- oval port:	10 - 25mm			
- round port:	6 - 25mm			
Number of splice trays	6	4	2	2
Splice tray capacity	24 single fibers			
Splice protector position	on both sides of the tray			
Number of splice protectors	144	96	48	48
Splice protector length	45mm			
Dimension	421 x 185mm			

Pictures



Exterior Structure Diagram



GJS03 A8 with S1 splice tray

A closure can accommodate up to 4 trays with a capacity of 24 fiber splices each. The splice protectors are placed in the middle of the tray.

The FO closure design allows using loose tube storage baskets behind the splice trays.

Available only plastic spice tray support module.

1 oval and 8 round cable ports



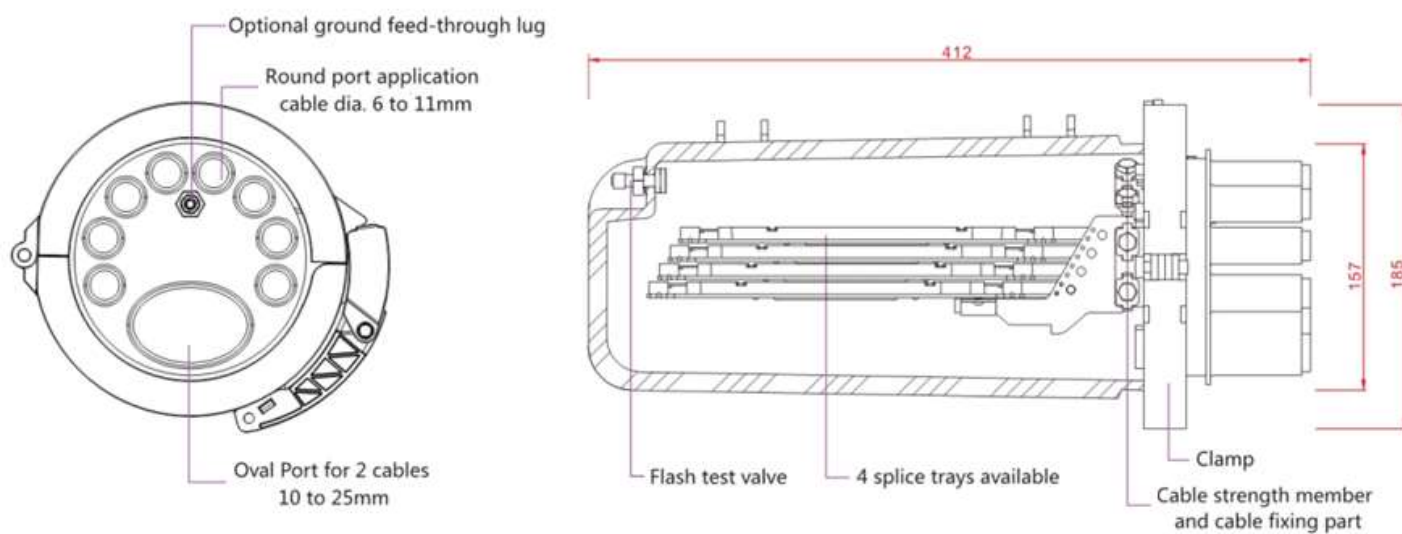
Technical Specification

Model	GJS03-A8-S1	
Splice tray type	S1	
Product name	A8-S1-96-P	A8-S1-48-P-SB
KST product code	7.6227/OSP	7.6244/OSP
Closure capacity	96 fibers	48 fibers
Maximum capacity	96 fibers	96 fibers
Splice tray holder material	PP alloy	
Storage basket	option	yes
Number of entry ports		
- oval port:	1	
- round port:	8	
Applicable cable diameter, mm		
- oval port:	10 - 25mm	
- round port:	6 - 25mm	
Number of splice trays	4	2
Splice tray capacity	24 single fibers	
Splice protector position	in the middle of the tray	
Number of splice protectors	96	48
Splice protector length	45mm	
Dimension	412 x 185mm	

Pictures



Exterior Structure Diagram



GJS03 A8 with S2 splice tray

A closure can accommodate up to 4 trays with a capacity of 24 fiber splices each. The splice protectors are placed in both sides of the tray.

The FO closure design allows using loose tube storage baskets behind the splice trays.

Available only plastic spice tray support module.

1 oval and 8 round cable ports



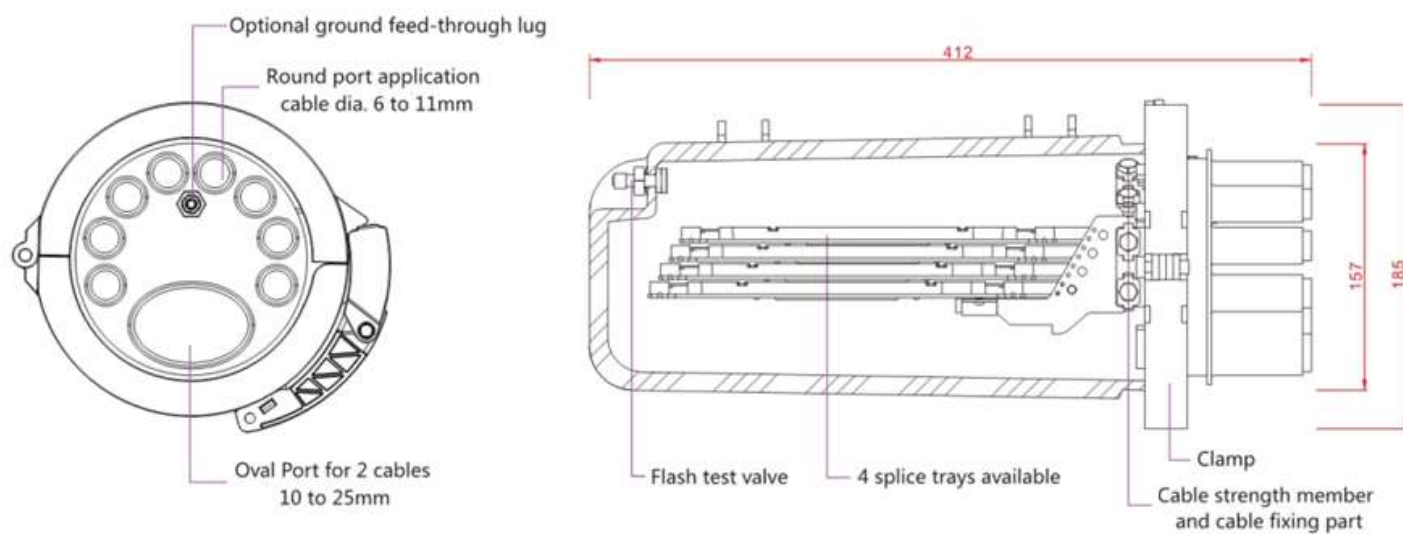
Technical Specification

Model	GJS03-A8-S2	
Splice tray type	S2	
Product name	A8-S2-96-P	A8-S2-48-P
KST product code	7.6225/OSP	7.6228/OSP
Closure capacity	96 fibers	48 fibers
Maximum capacity	96 fibers	96 fibers
Splice tray holder material	PP alloy	
Storage basket	option	option
Number of entry ports		
- oval port:	1	
- round port:	8	
Applicable cable diameter, mm		
- oval port:	10 - 25mm	
- round port:	6 - 25mm	
Number of splice trays	4	2
Splice tray capacity	24 single fibers	
Splice protector position	in the middle of the tray	
Number of splice protectors	96	48
Splice protector length	45mm	
Dimension	412 x 185mm	

Pictures



Exterior Structure Diagram



GJS03 B4 with B2 splice tray

A closure can accommodate up to 6 trays with a capacity of 24 fiber splices each. The splice protectors are placed in both sides of the tray.

The FO closure design allows using loose tube storage baskets behind the splice trays.

Available only plastic spice tray support module.

1 oval and 4 round cable ports



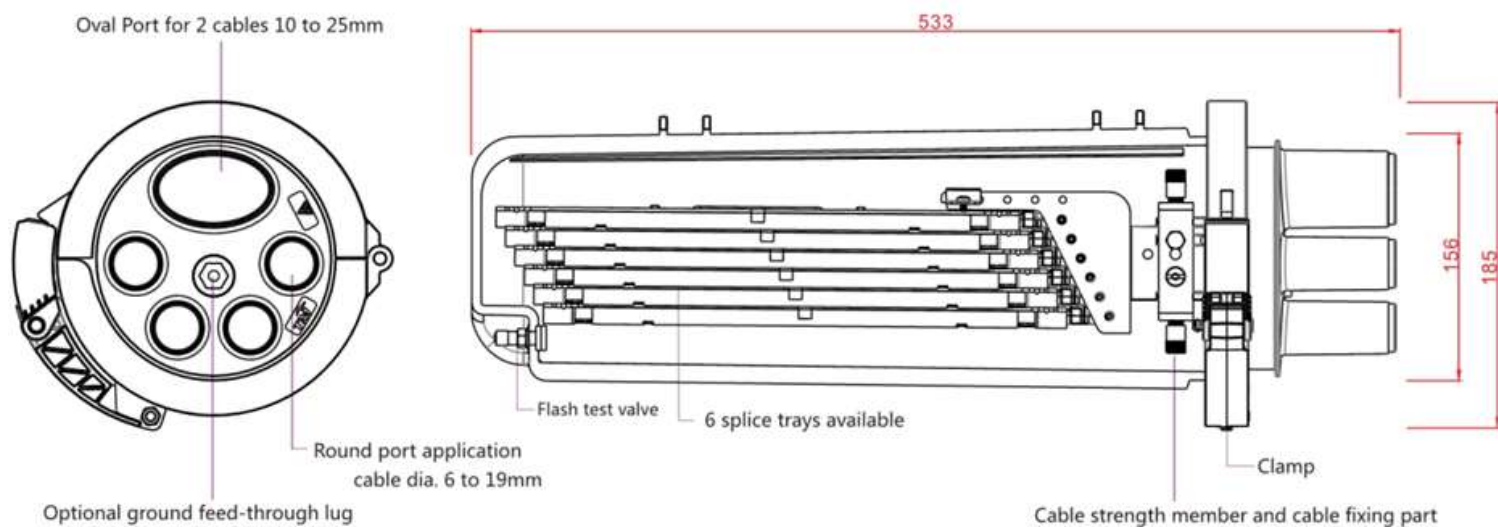
Technical Specification

Model	GJS03-B4-B2	
Splice tray type	B2	
Product name	B4-B2-144-P	B4-B2-144-P-SB
KST product code	7.6220/OSP	-
Closure capacity	144 fibers	
Maximum capacity	144 fibers	
Splice tray holder material	PP alloy	
Storage basket	option	yes
Number of entry ports		
- oval port:	1	
- round port:	4	
Applicable cable diameter, mm		
- oval port:	10 - 25mm	
- round port:	6 - 25mm	
Number of splice trays	6	
Splice tray capacity	24 single fibers	
Splice protector position	on both sides of the tray	
Number of splice protectors	144	
Splice protector length	45mm	
Dimension	533 x 185mm	

Pictures



Exterior Structure Diagram



GJS03 B8 with B2 splice tray

A closure can accommodate up to 6 trays with a capacity of 24 fiber splices each. The splice protectors are placed in both sides of the tray.

Available two splice tray support modules – metallic and plastic.

1 oval and 8 round cable ports



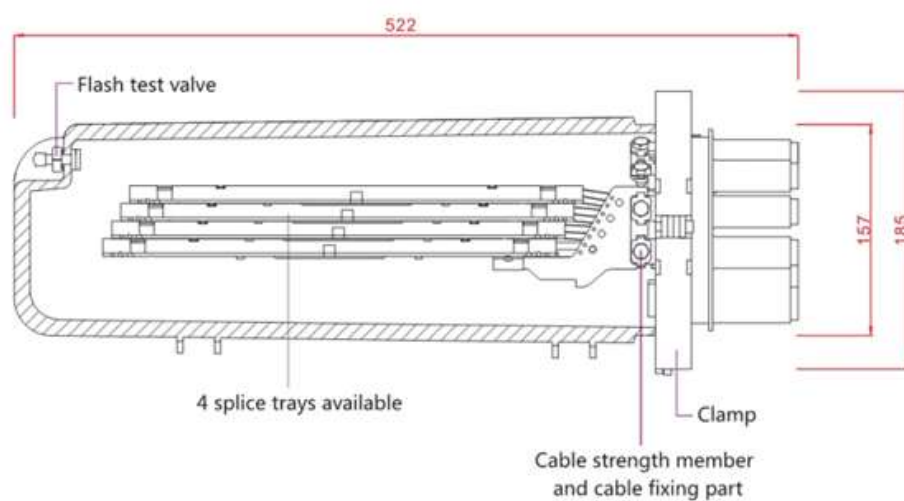
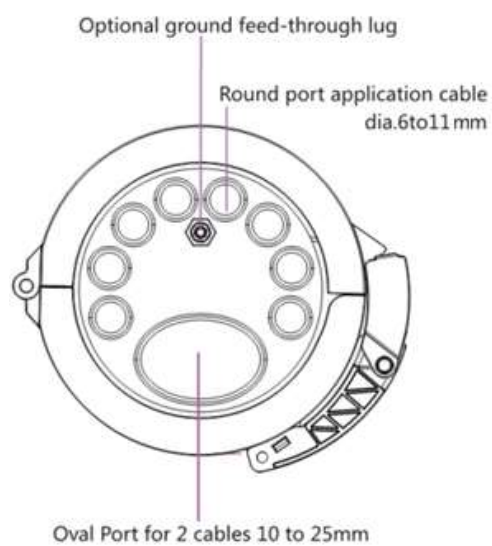
Technical Specification

Model	GJS03-B8-B2	
Splice tray type	B2	
Product name	B8-B2-144-P	B8-B2-144-M
KST product code	7.6247/OSP	7.6240/OSP
Closure capacity	144 fibers	
Maximum capacity	144 fibers	
Splice tray holder material	PP alloy	metallic
Storage basket	no	no
Number of entry ports		
- oval port:	1	
- round port:	8	
Applicable cable diameter, mm		
- oval port:	10 - 25mm	
- round port:	6 - 25mm	
Number of splice trays	6	
Splice tray capacity	24 single fibers	
Splice protector position	on both sides of the tray	
Number of splice protectors	144	
Splice protector length	45mm	
Dimension	522 x 185mm	

Pictures



Exterior Structure Diagram



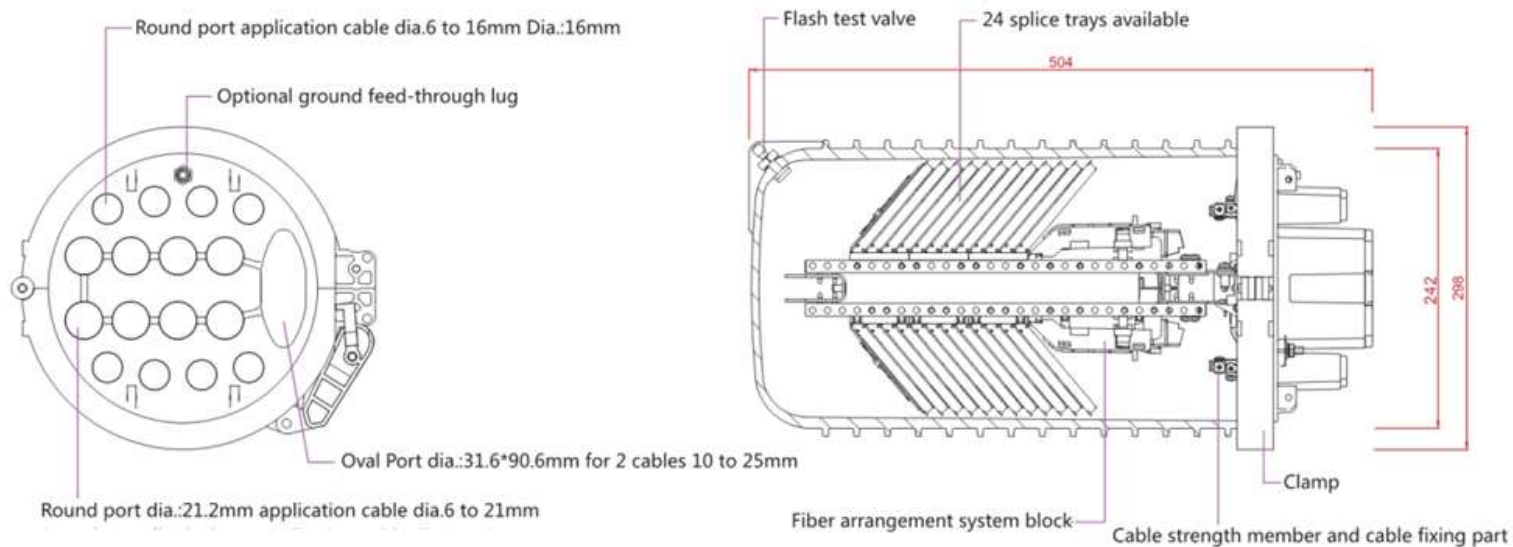
GJS03-M5AX, max. 288 splices



Parameter Table

Model	GJS03-M5AX
Splice tray type	ST-MxAX
Product name	M5AX-288
KST product code	7.6233/OSP
Closure capacity	288 fibers
Maximum capacity	288 fibers
Splice tray holder material	PP alloy
Storage basket	no
Number of entry ports	
- oval port:	1
- round port:	8 + 8*
Applicable cable diameter, mm	
- oval port:	10 - 25mm
- round port:	8ports: 6 - 21mm 8ports: 6 - 16mm *
Number of splice trays	24
Splice tray capacity	12 single fibers
Splice protector position	in the middle of the tray
Number of splice protectors	288
Splice protector length	40mm
Dimension	504 x 298mm

Exterior Structure Diagram



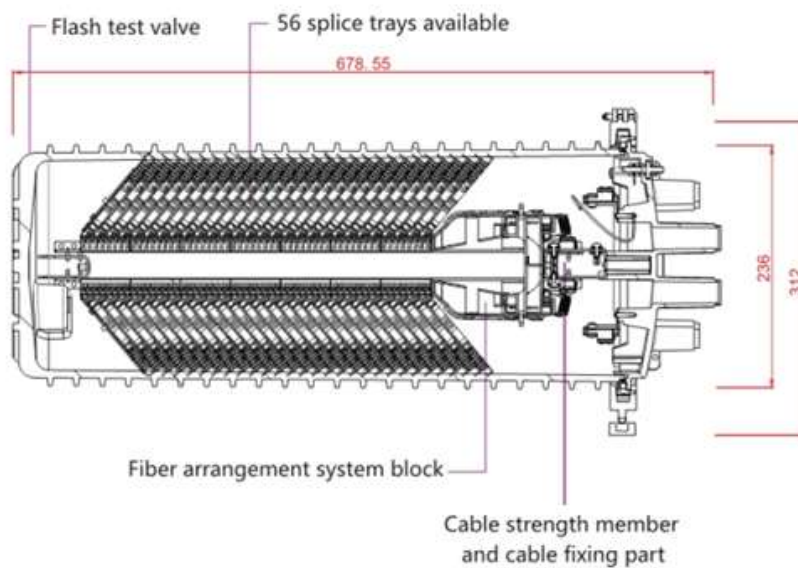
GJS03-M4AX, max. 672 splices



Parameter Table

Model	GJS03-M4AX
Splice tray type	ST-MxAX
Product name	M4AX-576
KST product code	7.6234/OSP
Closure capacity	576 fibers
Maximum capacity	672 fibers
Splice tray holder material	PP alloy
Storage basket	no
Number of entry ports	
- oval port:	1
- round port:	8 + 8
Applicable cable diameter, mm	
- oval port:	10 - 25mm
- round port:	8ports: 6 - 21mm 8ports: 6 - 16mm
Number of splice trays	48
Splice tray capacity	12 single fibers
Splice protector position	in the middle of the tray
Number of splice protectors	576
Splice protector length	40mm
Dimension	679 x 312mm

Exterior Structure Diagram



SOFIA /HEAD OFFICE/



Lulin 1 Region, 357 Slivnitza Blvd., Sofia 1336, Bulgaria



Mon-Fri 9:30 – 17:30



+359 2 927 72 54



+359 2 927 72 56



+359 2 927 72 56



sales@kst-bg.com



support@kst-bg.com



[kst-bulgaria](#)

SKOPJE – MAKEDONIJA



UL15-ti Korpus br.2, magacin br.8, Skopje, Makedonija /FERSPED AD,Sektor Javni i Carinski Skladista/



Mon-Fri 9:30 – 17:30



+389 23 101070



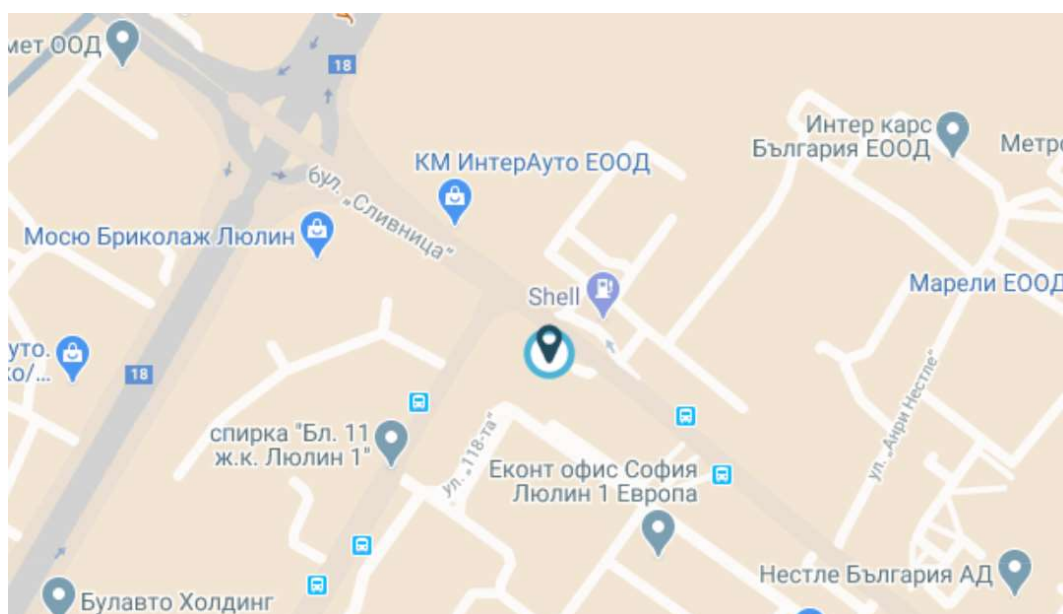
+359 2 927 72 56



sales@kst-bg.com



[kst-bulgaria](#)



KST Ltd.

Address: 357 Slivnitza Blvd.,
Sofia, Bulgaria

Tel: +359 2 927-72-56
Fax: +359 2 927-00-14

Web: www.kst-bg.com
E-mail: sales@kst-bg.com